

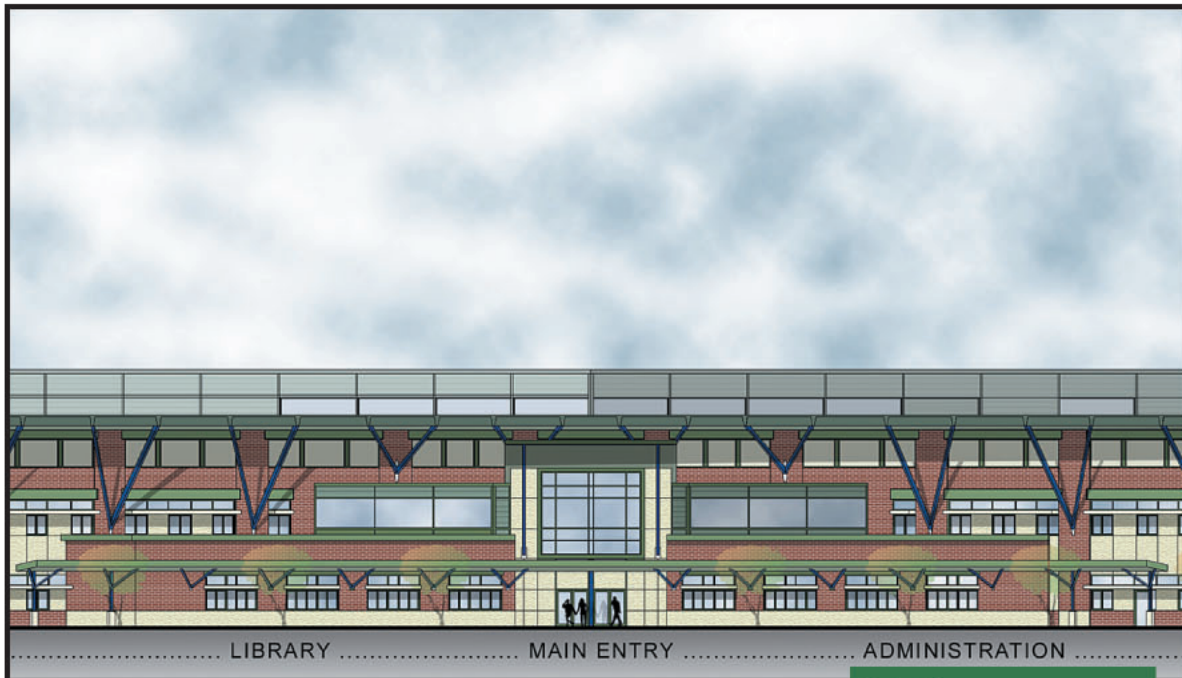
top projects  
2002  
#8

## CAMAS HIGH SCHOOL

Camas, Wash.

Camas High School is a new 215,000-square-foot facility that accommodates 1,400 students in grades 9 through 12, with core facilities designed to allow future growth of up to 1,600 students. The school is located on a 52-acre site, with axis of the school focusing on the view of Mount Hood. The school is centered around a central commons/assembly space. Academic, athletic and arts wings surround the commons, which is also accessible directly from the exterior of the building. A 300-seat performing arts center is expandable to 600 seats by extending folding theater seating into the commons. Folding operable walls separate the seating from the assembly area.

top projects  
2002  
#8



Southeast Elevation. Rendering courtesy of Northwest Architectural Co.

*Project Cost:*  
\$31.75 million  
*Sitework Start:*  
June 2001  
*Completion:*  
June 2003  
*Peak Construction Employment:*  
150-200

*General Contractor:*  
TODD CONSTRUCTION INC.  
P.O. Box 949  
Tualatin, OR 97062  
www.toddconstruction.com

*Owner:*  
Camas School District No. 117

*Project Manager:*  
Larry Kennebeck

*Project Superintendent:*  
Harv Wingerd

*Architect:*  
Northwest Architectural Co.

*Engineers:*  
Geocon Northwest, Kramer-Gehlen & Associates, MKE & Associates Inc., Otak

*Other Associates:*  
Charbonneau Engineering, Halliday Associates, Knudson & Ward, Olson Engineering, Otak, Michael Yantis Associates

*Subcontractors:* Access Control Systems Inc., Advanced Fireproofing & Insulation Co., All City Glass Co., Alpha Exterior, Architectural Metal Works Inc., Atlas Track & Tennis, Audio Acoustics Inc., B&B Tile & Masonry, Bell Hardware, Big Sky Supplies, Cascade Fire Protection Co., Chown Inc., Concrete Technology, Conspec Systems Inc., Construction Supply Inc., CPC Equipment Inc., Crawford Roll-Lite Door, WH Cress Co. Inc., Fabrication Products Inc., Fairway Mechanical Contractors Inc., Farwest Steel, Finetex International Inc., Gelco Construction, Glacier Northwest, Hillstrom Cabinets Inc., Interior Technology Inc., John's Waterproofing, Kervin Brothers Ornamental Iron Inc., Lakeside Industries, McDonald & Wetle Inc., Michael's Precast Concrete, Mudslingers Concrete, Northwest Earth Movers Inc., NW Playground Equipment, Overly Door Co., Pacific Rock Products, Pole-Tech Co. Inc., Portland Fence Co. Inc., Powers West Corp., Prairie Electric Inc., Protech Theatrical, Rubensteins Contract Carpet, Saxton Bradley Inc., Schindler Elevator Corp., School Specialty, Shimer Steel, Site Lines Park & Playground Product, Spacesaver Specialists Inc., Stelth Sealcoat & Striping, Tapani Underground Inc., Teufel Nursery Inc., U.S. Food Service Contract Design, WB Wells & Associates Inc., West Coast Wallboard, Westside Painting Inc.